



MALTBYLEARNINGTRUST
Exceptional Experiences. Successful Lives.



Maltby Learning Trust

**Community
Impact Report
2024 -2025**

www.maltbylearningtrust.com

Foreword

Our Chief Executive Officer

This year has been defined by progress, partnership, and purposeful change.

Across our Trust, we continue to focus on what matters most ensuring every young person has access to an education that inspires ambition, nurtures well-being and creates real opportunity for the future. Our schools sit at the heart of their communities and we take that role seriously. We consider the needs around us, we respond with care and expertise and we invest where it will make the greatest difference.

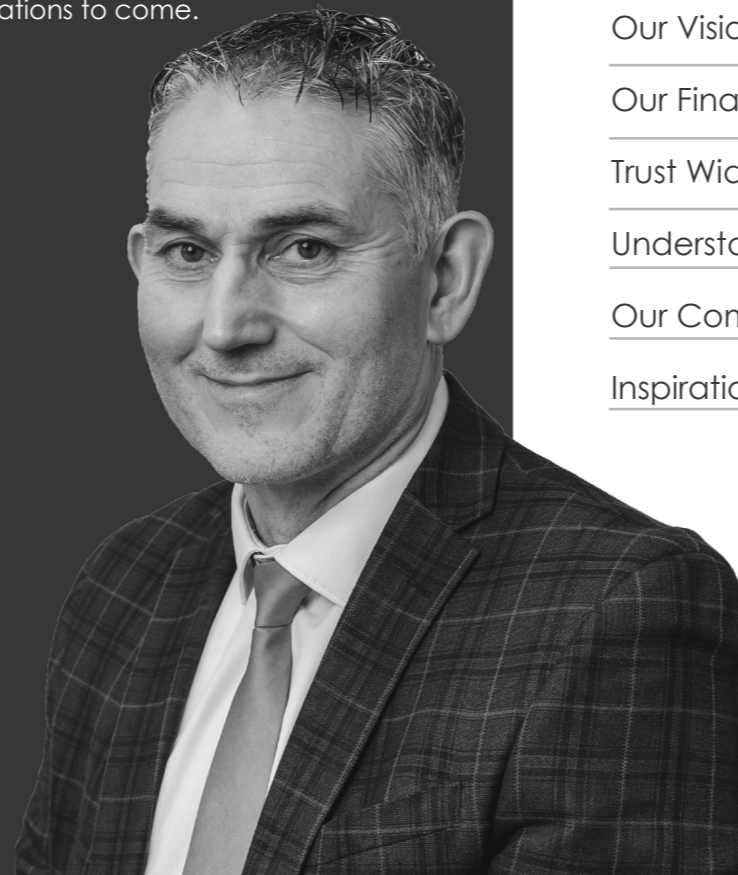
Our children and young people deserve the very best. That belief drives our efforts to provide the best education possible, improve environments, enhance specialist support and strengthen the resources available to every school. From well-being and safeguarding, to teaching excellence and enrichment, we are building strong foundations for lifelong success.

This year also marks a transformative step forward. We are excited to progress plans to merge with Accord Multi Academy Trust, forming a new organisation with a new name. This merger represents a shared commitment to our communities and a joint ambition to do more, reach further, and achieve better outcomes for all.

We are proud of the difference we are already making and we are energised by the possibilities that lie ahead.

Together, we will build a Trust that is stronger, more connected and better equipped to change lives, now and for generations to come.

David Sutton
 Chief Executive Officer



Contents

Foreword	02	Health and Well-being in Our Schools	18-19
About Maltby Learning Trust	04	Multi Agency Support Team	20
Our Vision, Values and Culture	06	Proposed Trust Merger	21
Our Financial Headlines	08-09	The Big Five Moves	22-23
Trust Wide Academic Outcomes	10-11		
Understanding the Communities We Serve	12		
Our Commitment	13		
Inspirational Learning Environment	15-17		

About Maltby Learning Trust...

Learning Through Collaboration

Through a strong culture of collaboration, we invest in the right people nurturing exceptional teachers, subject specialists, phase leaders, tutors and associate professionals, while building a pipeline of skilled leaders who drive meaningful educational transformation. We are committed to strengthening our learning community and empowering every individual to lead, grow and flourish.

Working in partnership with our schools, Trust networks and the wider local community, we create opportunities to research, innovate and share best practice, ensuring we deliver exceptional learning experiences and the very best outcomes for all our children and young people.

Together, we cultivate excellence empowering educators, inspiring leaders, and unlocking the potential of every young person through shared purpose, expertise, and collaboration



07
Academies



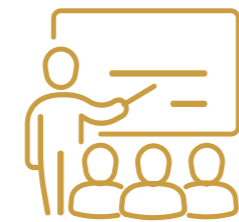
1,199
Primary Students



731
Employees



3,608
Secondary Students



5,517
Young People



710
Sixth Form Students

Our Academies



1

Maltby Academy
Founder school | 1st February 2014



2

Maltby Redwood Academy
Founder school | 1st February 2014



3

Maltby Manor Academy
Date Joined | 1st December 2014



4

Maltby Lilly Hall Academy
Date Joined | 1st March 2015



5

Ravenfield Primary Academy
Date Joined | 1st March 2015



6

Sir Thomas Wharton Academy
Date Joined | 1st March 2017



7

Wath Academy
Date Joined | 1st April 2019



All schools in MLT are judged Good Providers by Ofsted.



Our Vision

Our vision is a declaration of our aspiration, purpose and desired impact for every young person in our care. It paints a picture of what the Trust hopes to achieve long term, serving as a motivational and guiding star for all stakeholders and aligning their efforts towards a shared future.

Delivering **exceptional learning experiences** that enable all young people to thrive in a competitive world and lead **successful and fulfilling lives**.

Our Culture

The culture of the Trust consists of shared values, beliefs, and assumptions regarding expected behaviours and actions.

Our Values



INVESTING IN THE RIGHT PEOPLE

We develop talented, motivated individuals who are reflective, principled and resilient, ensuring every member of our community has the confidence and ambition to thrive.



COMMITTING TO THE LEARNING COMMUNITY

Dedication, accountability and inclusive collaboration underpin our commitment to a learning community where everyone feels valued and supported.



EMPOWERING ALL TO LEAD AND GROW

We foster a culture of growth, influence and accountability, empowering individuals to inspire, support and lead others with credibility and enthusiasm.



Our Financial Headlines

The Trust continues to demonstrate strong and secure financial performance, driven by a clear and responsible strategy. Our careful stewardship of reserves ensures that every investment we make delivers real and lasting benefits for all our children and young people.

This year, we have directed significant funding into projects that enhance the environments where learners grow, achieve and thrive. This includes improvements to our estates and outdoor areas, upgraded sporting and fitness facilities, the opening of a new Early Years Centre, and substantial expansion of sensory provision across our primary schools.

These capital improvements demonstrate our unwavering commitment to providing exceptional learning spaces, enriched resources and outstanding opportunities — supporting every learner to succeed now and long into the future.



We apply strong financial insight and evidence to allocate resources effectively, ensuring long-term stability and maximum impact across the Trust.



£45.3
Million in income received



£43.5
Million in expenditure



£2.4
Million fixed asset expenditure



£895k
in external funding secured for capital investment into the Trust facilities



£2
Million investment into MLT buildings and facilities



£412k
Investment in ICT hardware



£1.8
Million in educational supplies (Curriculum material and resources)

Trust Wide Academic Outcomes

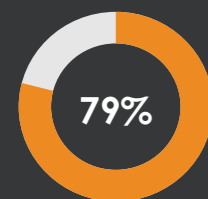
We remain deeply committed to securing exceptional outcomes for every learner. The progress and achievements seen across our schools this year are a testament to the ambition of our young people and the passion, expertise and dedication of our staff.

We continue to provide rich, engaging and high-quality learning experiences that enable students to flourish academically and personally. With a strong emphasis on development, character and ambition, every child is supported and challenged to reach their full potential.

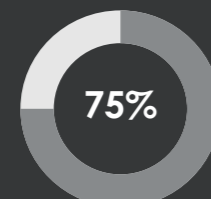
Our collective commitment to excellence ensures we are shaping resilient, knowledgeable and confident young people, fully prepared for the next stage of their education and the rapidly changing world beyond school.

Key Stage 2 Reading, Writing and Maths

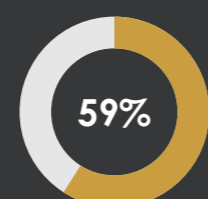
MLT Expected Standard Reading



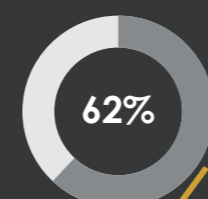
National Average



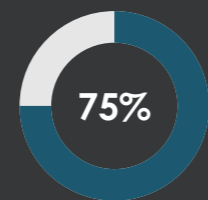
MLT Expected standard Reading, Maths and Writing



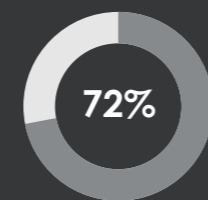
National Average



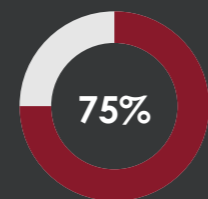
MLT Expected Standard Writing



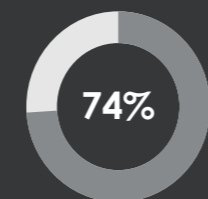
National Average



MLT Expected Standard Maths



National Average



Key Stage 4 GCSE Examination Results

Attainment 8 Score - 2025



Percentage of students achieving grade 4+ in English and Maths - 2025



Percentage of students achieving grade 5+ in English and Maths - 2025



Trust Average National Average

Progress data has not been made available for this examination cycle; therefore, all results shown represent attainment only.

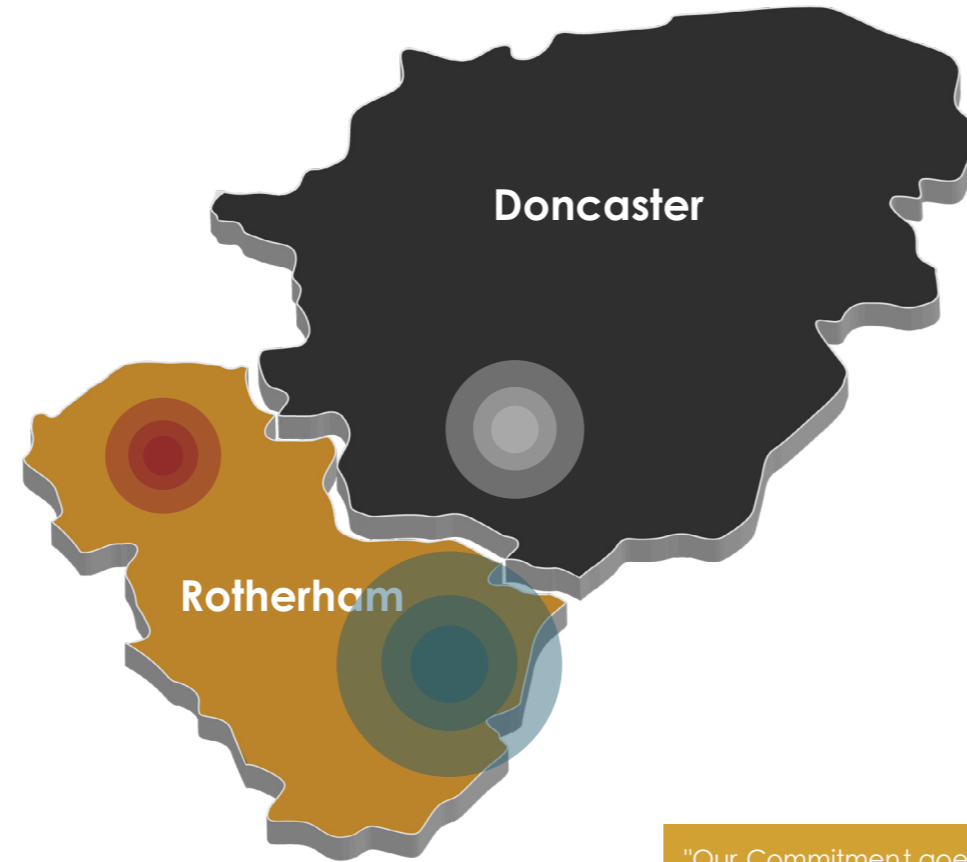
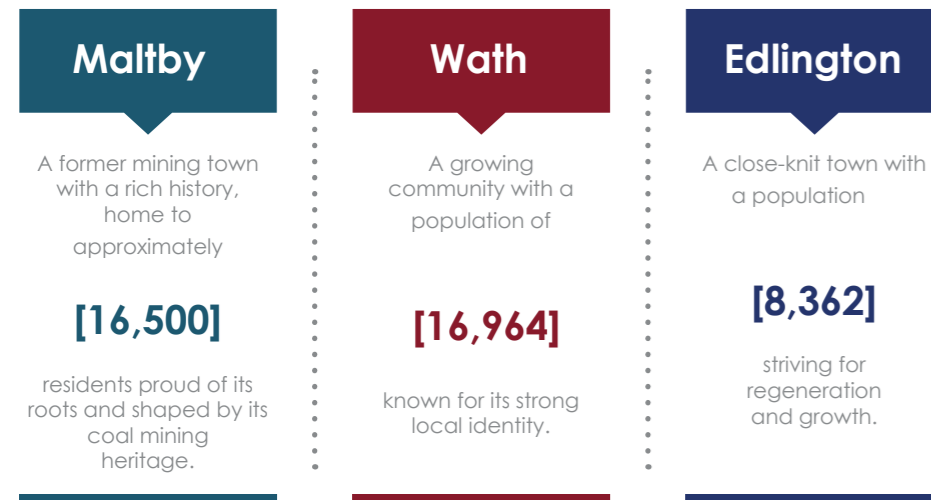


Understanding the Communities We Serve



We are committed to transforming lives through education across Maltby, Wath and Edlington. Each of our schools serves a unique community with its own strengths, needs and aspirations. By deeply understanding the children, families and local contexts we work within, we shape our support and provision to ensure every young person is known, valued and able to reach their full potential.

Population Overview

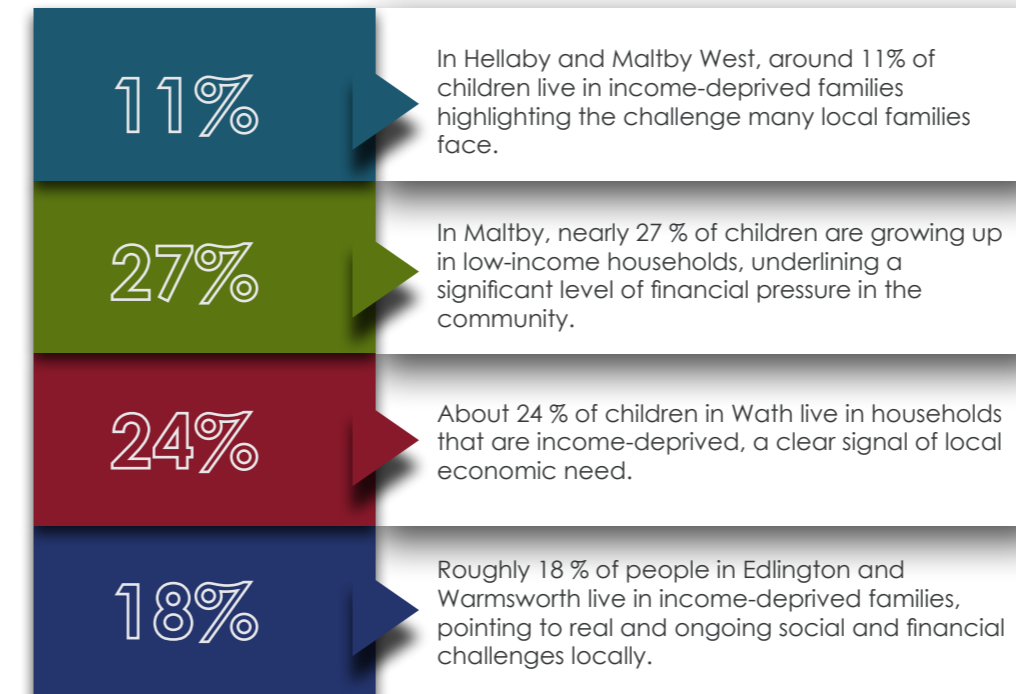


"We aim to transform lives through education in Maltby, Wath, and Edlington".

"Our Commitment goes beyond education, as one of the biggest employers".

Across Maltby, Wath, and Edlington where childhood obesity, mental health needs and preventable illness remains higher than national average levels, we are building healthier, more resilient communities through education and partnership.

Many of the communities we serve have a long established history in local mining and in some areas this has left behind a social, economic and environmental legacy. Their physical remains, associated settlements and infrastructure form a significant part of today's historic environment. Every generation has placed its own values on this legacy with attitudes changing radically over time and conditioning to change. A number of children and their families in our communities face financial challenges, impacting on their access to resources and opportunities.



Our Commitment

We are deeply committed to empowering every young person in the communities we serve. Many of our children face challenges linked to disadvantage and in places like Hellaby and Maltby, Wath, Edlington and Warmsworth too many grow up with barriers that can limit opportunity.

We are determined to break down those barriers by investing in our children, widening access to opportunity and ensuring every young person has the chance to thrive and flourish.

Our mission is to create exceptional learning experiences that spark curiosity, build confidence, and unlock potential. We tailor our support to meet the unique needs of each student, helping them grow the skills, resilience and belief in themselves needed to succeed.

By working closely with families, schools and local partners, we ensure that every student finishes their education with purpose, equipped with the knowledge, opportunities and ambition to step into a brighter future and lead fulfilling, successful lives.

When we lift the children in our community, we lift the future of our community.



Inspirational Learning Environment

Projects across the Trust

We are committed to creating world-class learning environments that inspire ambition, raise aspirations and ensure every young person has the opportunity to succeed. By responding directly to the needs of the communities we serve, we are making targeted investments that transform our schools, ensuring our buildings, facilities and spaces reflect the highest standards of education and provide the support our learners need to thrive.

Wath Academy **New Resistance Suite**

Wath Academy's new resistance suite and strength and conditioning studio anchors a step-change in active lifestyles across the campus.

The upgraded gym underpins sports scholarships in football, rugby and netball, giving students daily access to structured, rehabilitation and recovery, and video-supported analysis alongside their studies.

Beyond performance, the space broadens participation, building confidence, bone health and resilience while reducing injury risk and improving mental well-being, so every young person is moving more, more often, in a safe and inclusive setting.



Maltby Lilly Hall Academy **Early Years Centre**

Maltby Lilly Hall Academy has transformed the former Linx building on Lilly Hall Road into a dedicated Early Years Centre, opened in September 2025.

Designed for two-year-olds through nursery age, the reconfigured, child-centred spaces create light, safe and stimulating environments that spark language, curiosity and early social development.

For families, the centre brings high-quality provision closer to home and knits services into a familiar community hub, breathing new life into a local landmark while widening access to ambitious early education.

Maltby Manor Academy **Full Refurbishment**

Maltby Manor Academy is currently undergoing a major whole-school refurbishment, delivered in carefully planned phases to minimise disruption and maximise impact. Much of the work has already been completed, with significant improvements now visible across the school. This includes upgraded classrooms and learning spaces, improved communal areas and the installation of a more efficient and sustainable heating system to create a comfortable environment for both students and staff.

As the programme continues, the Academy has also developed a brand-new Alternative Provision facility. This dedicated space will offer tailored support for students who benefit from a more personalised approach to learning, helping to remove barriers, increase engagement and meet a wider range of needs.



Pops Outdoor Adventure **Wraparound Centre**

A fantastic new after-school provision has launched at Maltby Manor Academy through a partnership with Pop's Outdoor Adventure, offering high-quality wraparound care for children in Years 1-6. Based in the newly developed Hub, the club provides a vibrant mix of arts and crafts, sports, games, and outdoor learning from 3:00 pm - 6:00 pm each weekday, with plans to extend the offer to Foundation Stage 2/Reception children. Sessions start from just £10, including snacks, making this a flexible and affordable option for busy families.

To ensure accessibility for more students, Pop's also provides free minibus transport from Maltby Redwood Academy and Maltby Lilly Hall Academy. This collaboration, exclusive to our Trust, reflects our commitment to widening opportunity and creating enriching environments where children can play, learn and thrive.



SCAN TO
BOOK ONLINE

Maltby Academy **Boxing Facility**

Maltby Academy's new boxing facility, developed with Dinnington Community Boxing Club, adds a powerful strand to our health and engagement offer. Structured sessions build aerobic fitness, coordination and core strength while teaching discipline, focus and self-control. Partner coaches enable targeted interventions and after-school opportunities (including girls-only sessions), giving a positive outlet to a wider range of students. Early indications are that boxing is boosting confidence and sense of belonging, translating into calmer classrooms and better learning.



Health and Well-being in Our Schools

We are dedicated to supporting the health and well-being of every learner, ensuring they have the foundations to thrive both inside and outside the classroom. By listening closely to the needs of our communities, our schools are embedding well-being into everyday life, offering meaningful experiences, guidance and activities that encourage healthy habits, build resilience and empower young people to make positive choices that last.

We believe that every young person should have the opportunity to lead an active, healthy and fulfilling life.

Key initiatives include:

Wednesday Afternoon Enrichment

In all our secondary schools, every student takes part in dedicated enrichment sessions every Wednesday afternoon, a commitment that ensures all young people, regardless of background, ability, or circumstance, can access high-quality opportunities beyond the classroom. These sessions provide a rich and varied programme of activities that promote physical activity, creativity, leadership and teamwork, helping students to discover new interests, develop new skills, and build confidence.

By removing financial, social and practical barriers, our enrichment offer is truly inclusive; every young person can participate, explore and benefit. Whether it's sport, the arts, volunteering, outdoor learning or specialist clubs, these experiences broaden horizons and support personal growth, strengthening resilience and aspiration. Our Wednesday enrichment programme is a powerful reflection of our belief that all students deserve the chance to thrive, flourish and find their place in a world of possibility.

Healthy Meal Choices

Our catering teams work hard to provide balanced, nutritious and appealing meals that support healthy development. Alongside our daily offer, we run a series of themed focus weeks that introduce students to new flavours, seasonal ingredients, and the importance of making positive food choices. These weeks not only encourage students to try a wider range of healthy options, but also help them understand how good nutrition fuels concentration, energy, and overall well-being. By creating enjoyable food experiences and embedding healthy habits into school life, we empower young people to make informed choices that benefit them long into the future.

Be Well @ Work

We are proud to champion staff and well-being through the Be Well @ Work scheme. Our schools are committed to creating healthy, supportive environments where everyone can thrive. The majority of our schools have already achieved the prestigious Gold Award for well-being, with the remaining schools well on their way to reaching this standard. Together, we continue to build a culture that values health, happiness, and success for all.

Healthy Schools Scheme

As part of this nationally recognised programme, our schools embed health and well-being into the curriculum and whole-school culture. This includes initiatives around healthy eating, physical activity, emotional health, and creating a positive environment for learning.

Counselling and Family Support

Through the Multi-Agency Support Team, we offer counselling sessions and early intervention for children and families. This joined-up approach ensures that students and parent/carers can access the right help at the right time, supporting emotional health and resilience.



Together, these initiatives demonstrate our commitment to nurturing the whole child supporting not just academic success, but also the physical, emotional, and social well-being of every learner.



MAST

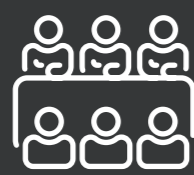
Key Statistics

Over the past 12 months, the MAST team has continued to make a powerful impact across our schools, colleges and communities, strengthening well-being, building resilience, and ensuring every individual feels supported and valued. Through our counselling services, targeted student support and specialist training in mental health, we have worked hand in hand with students, staff, and families to create healthier, more inclusive learning environments.



27

Frontline safeguarding, SEND and Alternative Provision staff access regular reflective supervision (links to good governance; reflects organisational culture and ethos).



88

MLT colleagues have now completed training in emotional well-being, reduces workplace stress and is conducive to staff retention.



259

Students supported



25

MLT colleagues trained in Youth Mental Health First Aid



3

Workshops on managing exam stress



2379

Counselling sessions a year (61 sessions per week)



100%

Staff said they found counselling helpful

Proposed Trust Merger

We are excited to share an update on our proposed merger with Accord Multi Academy Trust. Together, we will form a new organisation designed to be greater than the sum of its parts.

The Trust, reflecting our shared commitment to community, collaboration, and transformation. Our co-created vision and mission are rooted in three core priorities:

People | Place | Purpose

People

Investing in our staff, learners, and communities as our greatest resource.

Place

Serving our communities, working with partners to support growth, regeneration, and transformation.

Purpose

Delivering exceptional experiences and outcomes that secure success for all young people, especially the most vulnerable.



Uniting communities to provide exceptional experiences and achieve success.



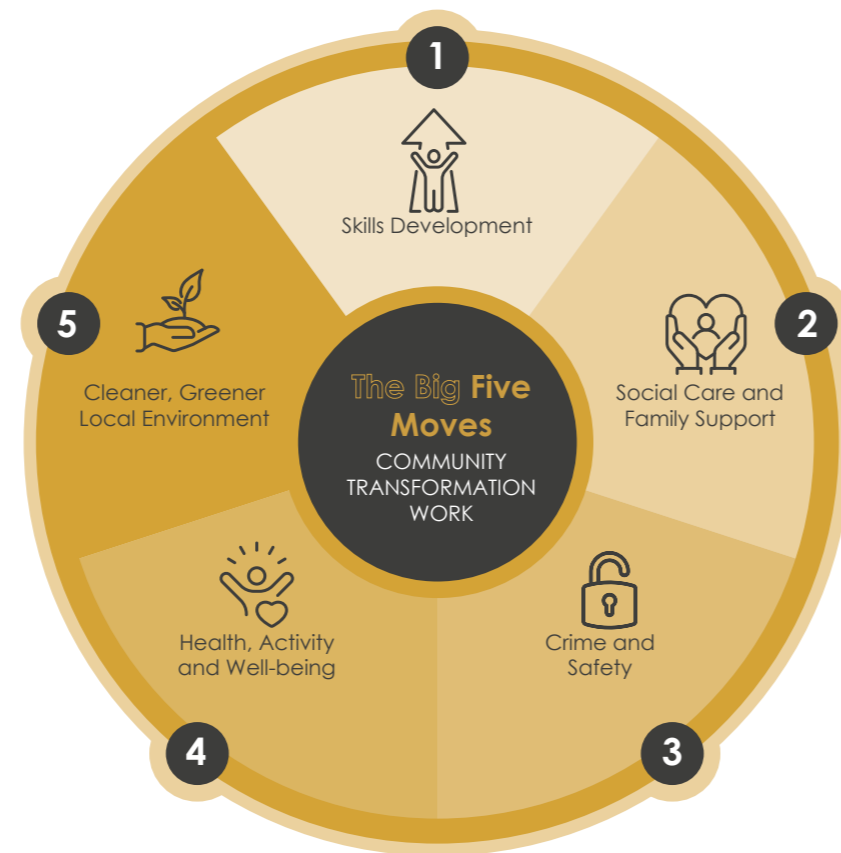
The Big Five Moves

Community Transformation Work

The Big Five Moves identified in the Trust's Strategic Plan are focused on driving community transformation and are embedded into the Trust's long-term strategic planning.

An Introduction to Our Big Five Moves

- Skills Development**
 Focuses on enhancing education and training opportunities to equip individuals with skills that are relevant to the local economy and future job markets.
- Social Care and Family Support**
 Aims to strengthen support structures for families, including targeted social care services, to build more resilient and stable communities.
- Crime and Safety**
 Seeks to foster safer neighbourhoods by collaborating with local partners to reduce crime and improve community safety.
- Health, Activity and Well-being**
 Encourages healthier lifestyles through initiatives promoting physical activity, mental health support, and overall well-being.
- Cleaner, Greener Local Environment**
 Prioritises environmental sustainability, promoting cleaner public spaces, green initiatives, and education on environmental stewardship.



As part of our long-term Strategic Plan, the Trust's **Big Five Moves** set out our commitment to driving meaningful community transformation. These five areas, Skills Development, Social Care and Family Support, Crime and Safety, Health, Activity and Well-being and creating Cleaner, Greener Local Environments, shape how we work, how we invest, and how we partner with others to deliver real change for the communities we serve.

This year, our core focus has been on Health, Activity and Well-being, recognising the significant impact that physical and mental health have on young people's ability to learn, thrive and succeed. On 24th October, colleagues from across the Trust came together for our annual conference to explore how we can work collectively to improve the health of our students and the wider community. The event brought powerful insights, shared expertise, and strengthened our commitment to removing barriers so every child can lead an active, healthy and fulfilling life.

Through our Big Five Moves, and especially our focus on health and well-being, we remain determined to support not just academic success, but the long-term physical, emotional and social wellbeing of every young person in our care.

These moves are aligned with the Trust's commitment to being an anchor organisation, using its position and resources to positively influence the social, economic, and environmental conditions of its local communities.



MALTBYLEARNINGTRUST

Exceptional Experiences. Successful Lives.

www.maltbylearningtrust.com

© @MLTrust ☎maltbylearning@saltby-learning-trust

Maltby Learning Trust is a Company Limited by Guarantee, Company Number: 07033915, Registered in England and Wales
Main Office: Maltby Grammar Business Hub, Braithwell Road, S66 8AB